

PART OF SECTION 8, T.5N., R.1W., S.L.B. & M.
 AMENDED PLAT OF
WASHINGTON TERRACE PARCEL 'A'

BLOCK 9

SEE PAGE 1

TAXING UNIT: 24

IN WASHINGTON TERRACE CITY

SCALE 1"=50'

FOR COMPLETE ENG DATA SEE
 ORIGINAL DEDICATION PLAT IN
 BOOK 10, PAGE 77-B OF RECORDS.

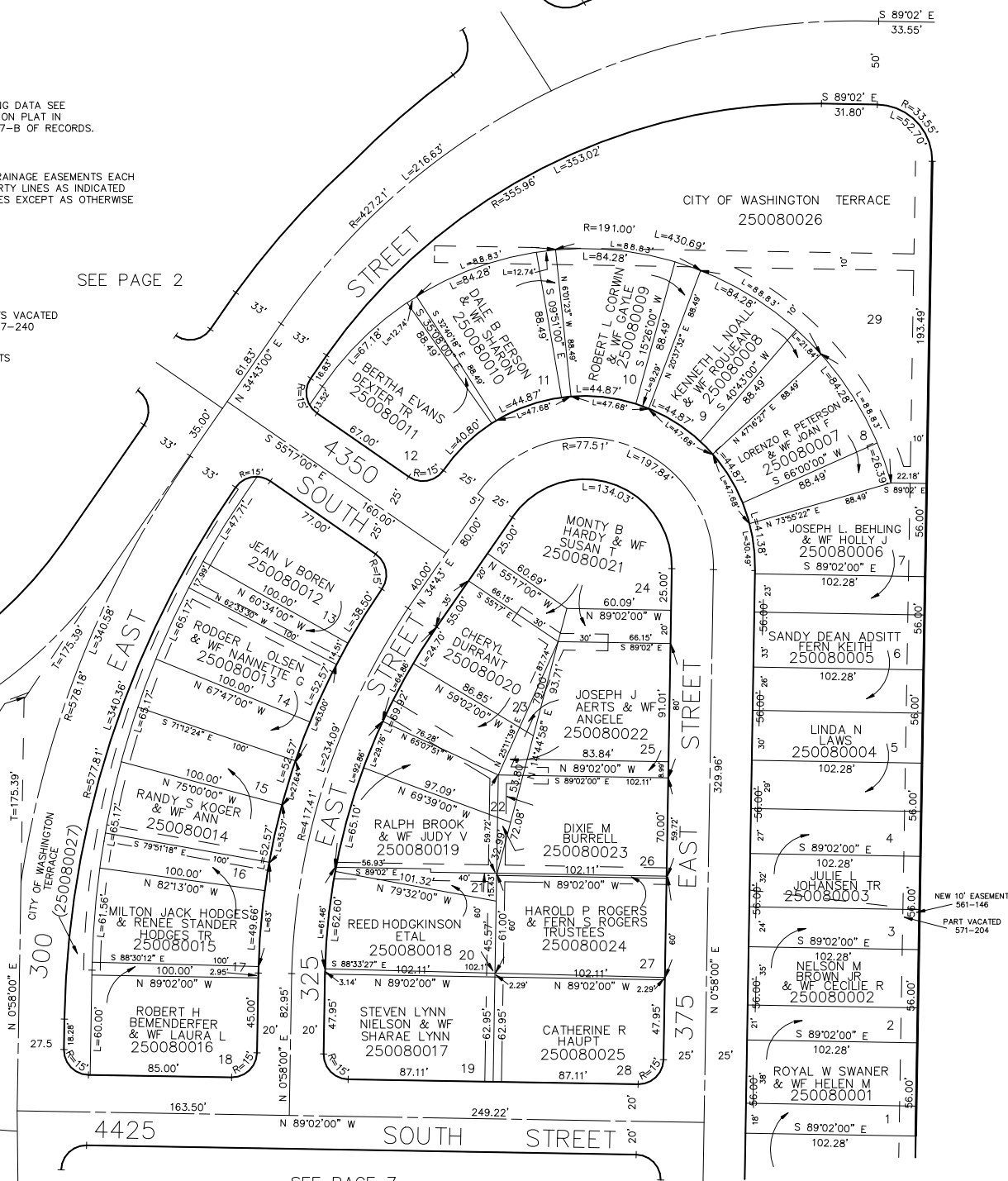
5' UTILITY & DRAINAGE EASEMENTS EACH
 SIDE OF PROPERTY LINES AS INDICATED
 BY DASHED LINES EXCEPT AS OTHERWISE
 SHOWN.

SEE PAGE 2

ORIGINAL EASEMENTS VACATED
 9-3-57 557-240

NEW EASEMENTS
 561-146

SEE
 PAGE
 4



SEE PAGE 7

WASHINGTON
 BLVD.